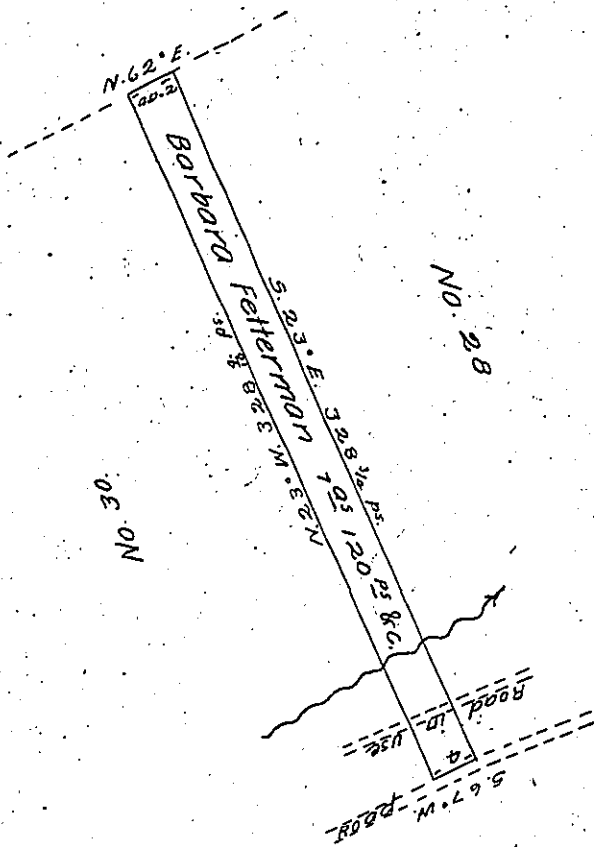


(see Pg. 45)

part of No. 9



A Draft of a tract of Land (Improved) situate between and adjoining Lots No. 28 and 30 in the Second Division of Newport one of the Seventeen Certified townships in Luzerne County containing seven acres one hundred twenty perches and allowance of six per Cent for Roads & c.

surveyed the above described tract of Land to Barbara Fetterman August 17th A.D. 1854 by Virtue of her Warrant dated August 8th A.D. 1854.

Henry Colt

To J. Porter Brawley Esq

D.S.

Surveyor General

IN TESTIMONY that the above is a copy of the original remaining on file in the Department of Internal Affairs of Pennsylvania, made conformably to an Act of Assembly approved the 16th day of February, 1833, I have hereunto set my Hand and caused the Seal of said Department to be affixed at Harrisburg, this second day of February 1905

Joseph R. Brown
Secretary of Internal Affairs.